

BEWEGUNGEN/MOUVEMENTS	03/2013	03/2012	Diff	%
1- Linienflüge/Lignes régulières	4402	4540	-138	-3 %
2- Nicht-Linienflüge/Lignes non régulières	196	209	-13	-6 %
3- Fracht/fret (cargo+express)	311	351	-40	-11 %
4- Taxiflüge/Vols taxi	327	453	-126	-28 %
5- Allgem. Verkehr und anderer nicht gew. Verkehr/Aviation générale et autre trafic non comm.	1982	2134	-152	-7 %
<b>TOTAL BEWEGUNGEN/MOUVEMENTS</b>	<b>7218</b>	<b>7687</b>	<b>-469</b>	<b>-6 %</b>

Kumul./2013	Cumul 2012	Diff	%
12111	12551	-440	-4 %
539	591	-52	-9 %
947	1046	-99	-9 %
890	971	-81	-8 %
4893	5557	-664	-12 %
<b>19380</b>	<b>20716</b>	<b>-1336</b>	<b>-6 %</b>

PASSAGIERE/PASSAGERS		03/2013	03/2012	Diff	%
1- Linienflüge/Lignes régulières	Lokal/Locaux	413468	380216	33252	9 %
	Transfer/Transfert	3744	7121	-3377	-47 %
	Transit	220	220		
	<b>Total:</b>	<b>417432</b>	<b>387337</b>	<b>30095</b>	<b>8 %</b>
2- Nicht-Linienflüge/Lignes non régulières	Lokal/Locaux	12765	11830	935	8 %
	Transit	1478	1367	111	8 %
	<b>Total:</b>	<b>14243</b>	<b>13197</b>	<b>1046</b>	<b>8 %</b>
3- Taxiflüge/Vols taxi	Lokal/Locaux	282	427	-145	-34 %
	Transit	4	4		
	<b>Total:</b>	<b>286</b>	<b>427</b>	<b>-141</b>	<b>-33 %</b>
<b>TOTAL</b>	<b>Total:</b>	<b>431961</b>	<b>400961</b>	<b>31000</b>	<b>8 %</b>
4- Allgem. Verkehr und anderer nicht gew. Verkehr/Aviation générale et autre trafic non comm.	Lokal/Locaux	293	524	-231	-44 %
	Transit	1	9	-8	-89 %
	<b>Total:</b>	<b>294</b>	<b>533</b>	<b>-239</b>	<b>-45 %</b>
<b>TOTAL</b>	<b>Total:</b>	<b>294</b>	<b>533</b>	<b>-239</b>	<b>-45 %</b>
<b>TOTAL PASSAGIERE/PASSAGERS</b>		<b>432255</b>	<b>401494</b>	<b>30761</b>	<b>8 %</b>

Kumul./2013	Cumul 2012	Diff	%
1077641	991607	86034	9 %
10459	17243	-6784	-39 %
220	232	-12	-5 %
<b>1088320</b>	<b>1009082</b>	<b>79238</b>	<b>8 %</b>
35605	35573	32	0 %
4428	2976	1452	49 %
<b>40033</b>	<b>38549</b>	<b>1484</b>	<b>4 %</b>
608	732	-124	-17 %
4	2	2	100 %
<b>612</b>	<b>734</b>	<b>-122</b>	<b>-17 %</b>
<b>1128965</b>	<b>1048365</b>	<b>80600</b>	<b>8 %</b>
1025	1297	-272	-21 %
10	9	1	11 %
<b>1035</b>	<b>1306</b>	<b>-271</b>	<b>-21 %</b>
<b>1035</b>	<b>1306</b>	<b>-271</b>	<b>-21 %</b>
<b>1130000</b>	<b>1049671</b>	<b>80329</b>	<b>8 %</b>

LUFTFRACHT - POST/FRET AVIONNE - POSTE		03/2013	03/2012	Diff	%
	Express	2752	2879	-127	-4 %
	Fracht/Cargo	551	525	26	5 %
<b>TOTAL</b>		<b>3303</b>	<b>3404</b>	<b>-101</b>	<b>-3 %</b>

Kumul./2013	Cumul 2012	Diff	%
7887	8158	-271	-3 %
1662	1522	140	9 %
<b>9549</b>	<b>9679</b>	<b>-130</b>	<b>-1 %</b>

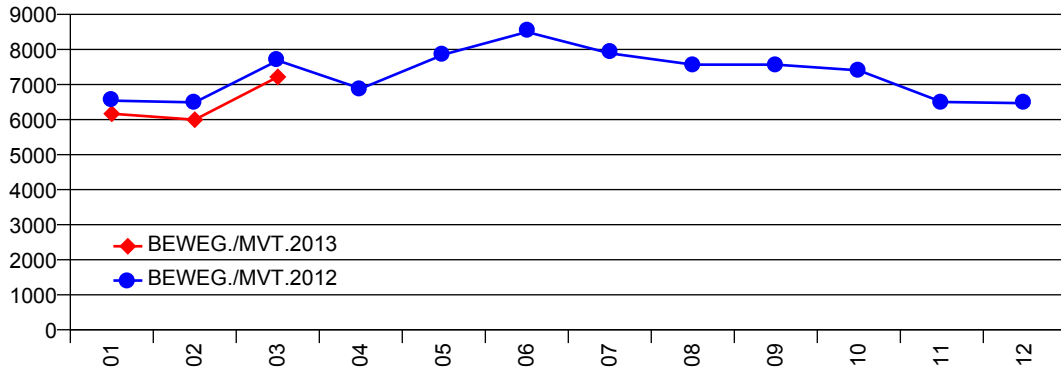
LKW FRACHT/FRET CAMIONNE		03/2013	03/2012	Diff	%
	Import	1331	1410	-79	-6 %
	Export	3362	3648	-286	-8 %
<b>TOTAL LKW FRACHT/FRET CAMIONNE</b>	<b>Total:</b>	<b>4693</b>	<b>5058</b>	<b>-365</b>	<b>-7 %</b>

Kumul./2013	Cumul 2012	Diff	%
3774	4172	-399	-10 %
8860	9662	-802	-8 %
<b>12634</b>	<b>13835</b>	<b>-1201</b>	<b>-9 %</b>

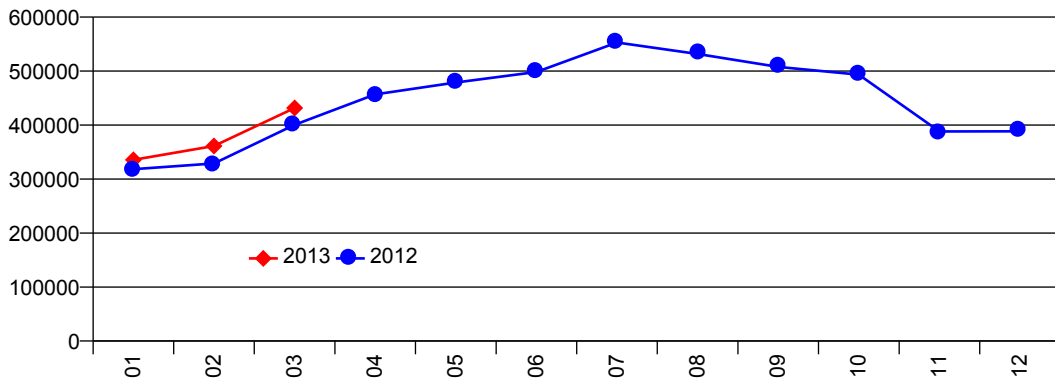
	03/2013	03/2012	Diff	%
<b>TOTAL FRACHT/FRET</b>	<b>7996</b>	<b>8462</b>	<b>-466</b>	<b>-6 %</b>

Kumul./2013	Cumul 2012	Diff	%
<b>22183</b>	<b>23514</b>	<b>-1331</b>	<b>-6 %</b>

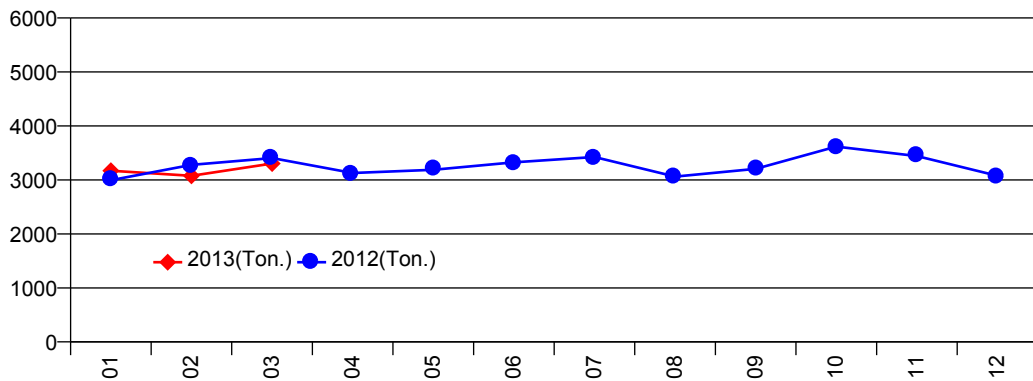
Bewegungen/Mouvements-Total



Passagiere/Passagers-Total



Luftfracht/Fret avionné-Total



LKW Fracht/Fret camionné-Total

